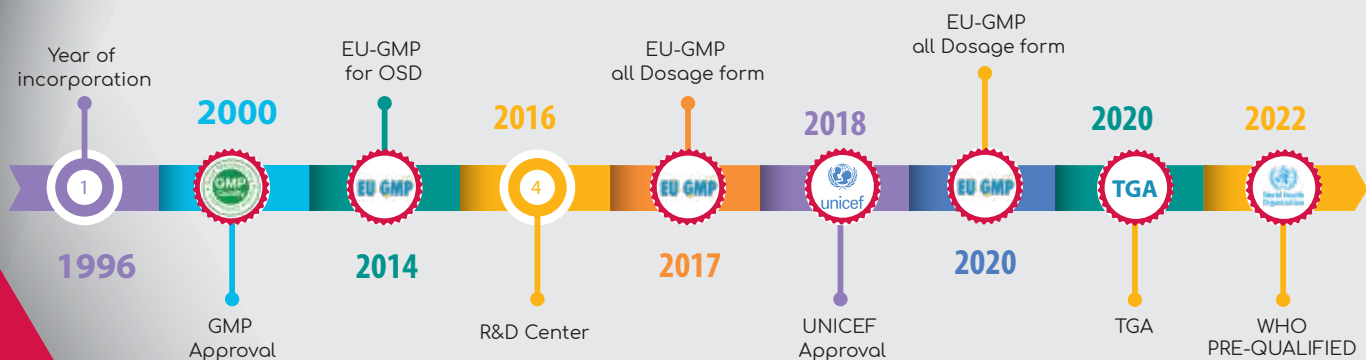


QUALITY HAS BEEN  
THE ONLY PLAN AT

SK GROUP  
SINCE  
1932



S Kant  
HEALTHCARE Ltd.



#### MILESTONES

55\$

Million p.a Revenue

600+

Employees

87+

Countries

2000+

Valid products  
registrations globally

[www.sk1932.com](http://www.sk1932.com) | [www.skant.com](http://www.skant.com)

# WHY SKANT?

## COMPANY OVERVIEW

- Incorporated in 1996
- EU GMP CERTIFIED
- Manufacturing Partner For EU, MHRA, TGA, SAHPRA, etc
- Independent State of the Art R&D Center
- APIs & Excipients Mfg
- Integrated Supply Chain from API to Finished Product \*

## API / Excipients & FDF Manufacturing

### RM/PM WAREHOUSE

- 3500 Sq.Meter warehouse for storage of Raw Material & Packing Material
- ERP Base Material Management System
- Temperature controlled from 25° C up to Ambient Temperature

### PACKING

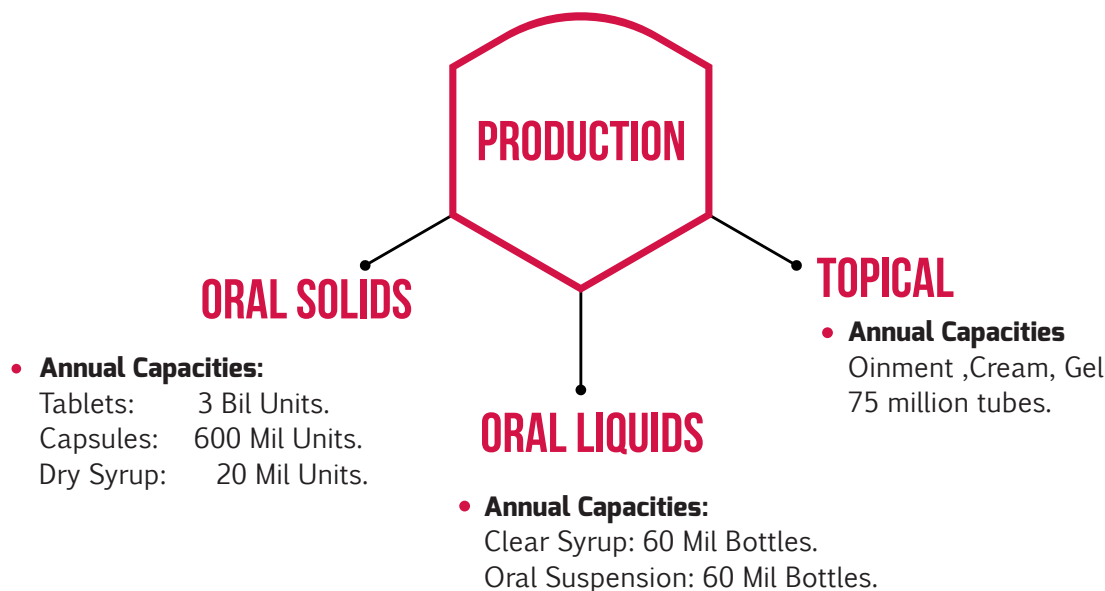
- 14 Packing Lines across multiple dosage forms.
- Track & Trace Ready for FMD Compliance with ATD Sticking
- Pharmacode Readers, Check Weigher, Auto Cartonators & Blister Inspection Systems installed

### QUALITY CHECK

- Server Controlled Instruments such as HPLCs, GC, UV, FTIR, TOC.
- Walk-in Stability Chambers covering all ICH zones & photostability.
- Dedicated Analytical Method Validation / Tech Transfer Cell for MA Site Transfer & Development Projects

### DISPATCH WAREHOUSE

- 3000 Sq. Meter Warehouse for Storage of Finished Product with Temperature control.
- Experience in shipment of temperature controlled products.



**DEDICATED PILOT PLANT / MFG LINE FOR: SCALE UP / TECH TRANSFER / EXHIBIT BATCHES.**

### APIS

- Artemisinin - based Salts
- Artemether / Dihydroartemisinin / Artesunate 25 M.T. p.a
- Lumefantrine 180 M.T. p.a
- Silver sulfadiazine 25 M.T. p.a

### EXCIPIENTS

- Metallic Stearates 600 M.T. p.a.  
(Magnesium, Calcium, Zinc)



## Overview

- Independent State-of-the-Art R&D Center of 709 SQ.M for development of finished dosage forms.
- Contract & Co-development for EU/MHRA/WHO-PQ/SAHPRA/TGA/Emerging markets
- Knowledge bank of 60+ Scientists of Doctorate & Post Graduate Level.

# RESEARCH

## Formulation Development

- Oral Solids: Tablet | Capsule | Dry Syrup  
Oral Liquids: Clear Syrup | Suspensions  
Topicals Preparations: Cream | Ointment | Gel
- Experience in development of dispersible, extended release & taste masked formulations.
- Experienced Team for Scale up from Lab scale to Exhibit batch scale at S Kant's EU GMP Site/ MA holder's CMO Site.



## Analytical Development

- Sophisticated Analytical Instruments such as HPLCS, UV, GC, FTIR, TOC Dissolution apparatus.
- Diffusion cell for IVRT Testing & Viscometers for Oral Liquid & Topical Preparations.
- Stability Chambers(Walk-in type) for all ICH Zones & Photostability .



## Packing Development

- In house team for evaluation of RLD Primary Packing Material & new packing material development.
- Lab Scale Packing Machines for packing material trials prior to commercialization.
- Artwork team well acquainted with regulatory requirements such as FMD Compliance, GS1, pharmacode, etc.



## Regulatory Affairs

- In House team for compilation of CTD Dossiers for filing.
- Tie-up with industry experts for IPR, eCTD preparation & BE studies.



## NOTES:



QUALITY HAS BEEN  
THE ONLY PLAN AT  
**SK GROUP**  
SINCE  
**1932**



**S Kant**  
HEALTHCARE Ltd.

[www.sk1932.com](http://www.sk1932.com)

[www.skant.com](http://www.skant.com)