

**CDMO / CMO
PARTNER**

**MULTIPLE
DOSAGE
MFG**

**PILOT
PLANT**

**EU-GMP/
MHRA/TGA
HEALTH CANADA
SAHPRA**

**FMD
READY**

S Kant
HEALTHCARE Ltd.

**EXHIBIT
BATCH
FOR BE**

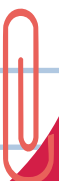
eCTD

**PACKING
DEVELOPMENT**

**INTEGRATED
SUPPLY
CHAIN**



NOTES



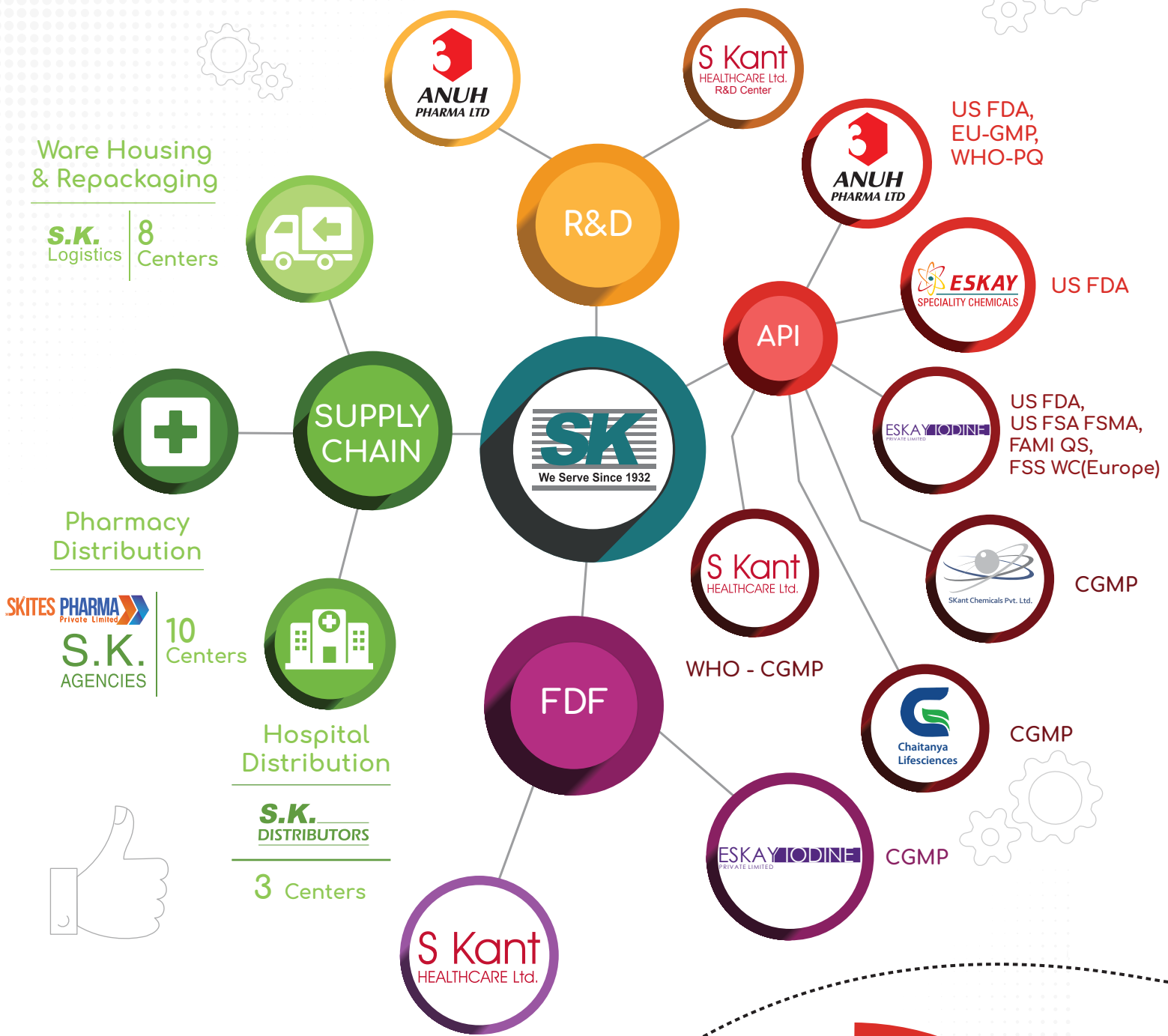
S Kant
HEALTHCARE Ltd.

**YOUR ONE-STOP
SOLUTION !**



www.skant.com

SK GROUP Serving Since 1932



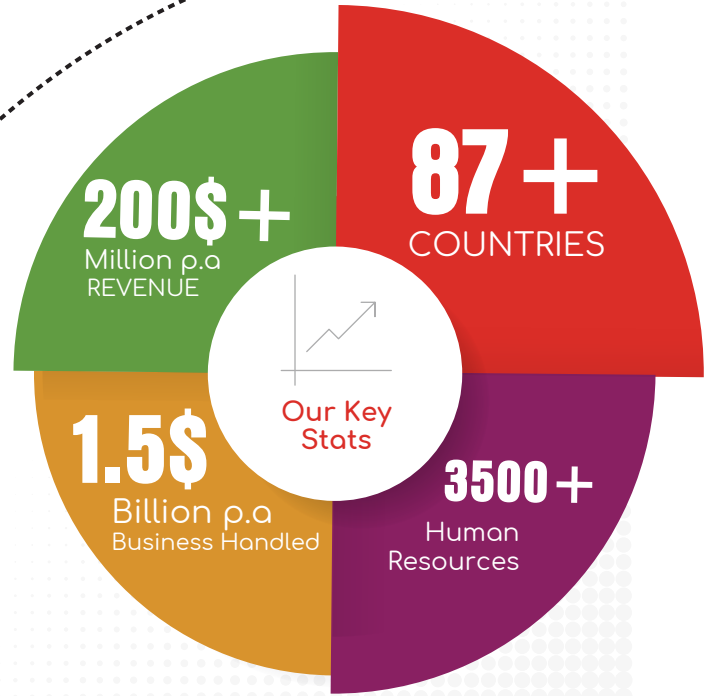
CSR INITIATIVES:

EDUCATION:

- SK College of Business Management
- SK School of Business Management
- SK College of Science & Technology
- SK Convention Center
- SK Balmandir (Playschool)
- SK Vocational Classes

HEALTHCARE:

- SK Diabetic Retinopathy Care Center
- SK Sumangal Medical Center
- SK Blood Bank



S kant HEALTHCARE Ltd - Your CMO Partner !

COMPANY OVERVIEW

- Incorporated in 1996
- EU GMP CERTIFIED 45,000 SQ.M FDF FACILITY
- Manufacturing Partner For EU, MHRA, TGA , SAHPRA,etc
- Independent State of the Art R&D Center
- APIs & Excipients Mfg
- Integrated Supply Chain from API to Finished Product *



OUR HISTORY

- 1996: Year of Incorporation
- 2014: EU GMP for OSD
- 2016: R&D Center
- 2017: EU GMP for all dosage forms
- 2018: UNICEF Approval
- 2020: EU-GMP Renewal
- 2020: TGA

CERTIFICATION



S Kant
HEALTHCARE Ltd.

MILESTONES

- 55\$** Million p.a Revenue
- 600+** Employees
- 87+** Countries
- 2000+** Valid products registrations globally



CONTACT

- Kalpesh Shah
- Nishit Shah
- Harshit Shah
- cmo@skant.com
- www.skant.com
- + (91-22) 6622 7575
- S Kant Healthcare Ltd.



LOCATIONS

Head quarter:



Worli, Mumbai. India.
Tel.: +91 22 6622 7575

Manufacturing:



Vapi, Gujarat. India.
Tel.: +91 7069064538

R & D Center:



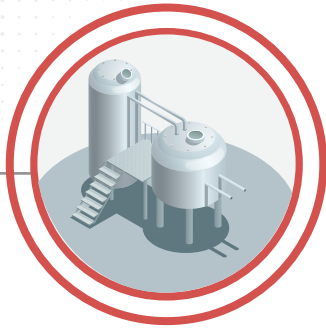
Navi Mumbai. India.
Tel.: +91 82912 85757

M A N U F A C T U R I N G



RM/PM Warehouse

- 3000 Sq.Meter warehouse for storage of Raw Material & Packing Material
- Temperature controlled from 2°C up to Ambient Temperature
- Dedicated Storage Area for Flammable Material
- Dedicated Storage Area for Controlled Substances
- ERP Base Material Management System



Production

Oral Solids

- **Annual Capacities:**
Tablets: 2.5 Bil Units.
Capsules: 600 Mil Units.
Dry Syrup: 20 Mil Units.
- Dedicated Pilot Plant/
Mfg Line For:
Scale Up/Tech Transfer/
Exhibit Batches.
- Packing Lines for Blister,
Strip & Bulk Packing.

Oral Liquids

- **Annual Capacities:**
Clear Syrup: 50 Mil Bottles.
Oral Suspension: 12 Mil Bottles.
- Dedicated Pilot Plant/
Mfg Line For:
Scale Up/Tech Transfer/
Exhibit Batches.
- Packing Lines for Glass,HDPE
& Pet Bottles with ROPP &
CRC Capping

Topical

- **Annual Capacities**
Ointment ,Cream, Gel
65 million tubes.
- Dedicated Pilot Plant/
Mfg Line For:
Scale Up/Tech Transfer/
Exhibit Batches.
- High Speed Lines for filling
in Alu & Lami Tubes.Jar
packing also available.



Packing

- 16 Packing Lines across multiple dosage forms.
- Track & Trace Ready for FMD Compliance with TE Stickers
- Pharmacode Readers, Blister Inspection Systems installed, Weight Check
- High Speed Cartonators for packing of patient packs.



Quality Check

- Server Controlled Instruments such as HPLCs, GC, UV, FTIR, TOC.
- Microbiology Section with required Infrastructure & Controls
- Walk-in Stability Chambers covering all ICH zones & photostability.
- Dedicated Analytical Method Validation/Transfer Cell for MA Site
Transfer & Development Projects



Dispatch Warehouse

- 3000 Sq. Meter Warehouse for Storage of Finished Product
with Temperature control.
- Experience in shipment of temperature controlled products.
- ERP Controlled Batch Release & Dispatch

RESEARCH



Overview

- Independent State-of-the-Art R&D Center for development of finished dosage forms.
- Contract & Co-development for EU/MHRA/WHO-PQ/SAHPRA/TGA
- Knowledge bank of 60+ Scientists of Doctorate & Post Graduate Level.



Formulation Development

- Oral Solids: Tablet | Capsule | Dry Syrup
Oral Liquids: Clear Syrup | Suspensions
Topicals Preparations: Cream | Ointment | Gel
- Experience in development of dispersible, extended release & taste masked formulations.
- Experienced Team for Scale up from Lab scale to Exhibit batch scale at S Kant's EU GMP Site/ MA holder's CMO Site.



Analytical Development

- Sophisticated Analytical Instruments such as HPLCs, UV, Dissolution apparatus.
- Diffusion cell for IVRT Testing, & Viscometers for Oral Liquid & Topical Preparations.
- Stability Chambers for all ICH Zones & Photostability .



Packing Development

- In house team for evaluation of RLD Primary Packing Material & new packing material development.
- Lab Scale Blister Machine, Tablet, liquide for packing material trials prior to commercialization.
- Artwork team well acquainted with regulatory requirements such as pharmacode, FMD Compliance, GS1, etc.



Regulatory Affairs

- In House team for compilation of CTD Dossiers for filing.
- Tie-up with industry experts for IPR, eCTD preparation & BE studies.



QUALITY HAS BEEN
THE ONLY PLAN AT

SK GROUP

SINCE

1932



S Kant
HEALTHCARE Ltd.

www.sk1932.com | www.skant.com

cmo@skant.com

